

McKeel Academy of Technology Uniform Policy:

While on campus, students attending McKeel Academy of Technology are required to dress appropriately. All uniform clothing must be purchased from the MAT Clothes Closet, Risse Brothers website at www.rissebrothers.com or from the Risse Brothers Uniform Store located at: 2525 Drane Field Road, Suite 11, Lakeland, FL 3381, Phone: 863-940-9913. Anyone needing financial assistance in obtaining uniforms should contact their School Counselor.

Parents, we need you to partner with us to ensure that your student abides by the dress code. Criticism and negative communication regarding these rules, creates an unwillingness to comply in children. We want to ensure that the dress code does not become a major issue at MAT. The dress code is NOT optional. We are here to provide an exceptional educational experience for all students. Students are expected to comply with the dress code and parents are expected to monitor compliance before their children leave home.

Uncorrectable Violations:

- These include torn, ripped, frayed, or cut clothing, missing belts, improper uniforms, incorrect lengths, hair violations, or inappropriate shoes.

Procedure for Violations:

- Office Referral: The student will be sent to the office if found with an uncorrectable dress code issue.
- Changing Clothes: The student must change into appropriate uniform clothing.
 - Options for Clothing:
 - Call Home: The student can call home for the correct uniform to be brought to them.
 - Purchase Option: Parents can buy a used clothing item (shirt, pants, shorts, skorts, or a new belt) online for \$10.
 - School Provision: If immediate provision or purchase isn't possible, the school will provide the item, and the cost will be added to the student's obligation.
- Return to Class: The student may return to class once the dress code violation is corrected.
- Repeated Violations:

- If the student is found with skort or shorts length violations twice, the student will be required to wear alternate uniform bottoms for the remainder of the year.

Uniforms must be worn appropriately as follows:

- **Waistline:** Skorts, pants, and shorts must be worn at the waist.
- **Shirts:** Shirts must be tucked in at all times and must remain unaltered. Rolling shirts under is not allowed. A uniform or spirit shirt **MUST** be worn at all times.
- **Skorts, Shorts, and Pants:** These items must not be rolled at the waist or hemline and must be at least mid-thigh length.
- **Outerwear:** Hoodies or jackets must not extend beyond the length of your shorts or skorts.
- **Belts:** Belts must be worn properly, with the buckle visible and fastened correctly.
- **Body Writing and Tattoos:** Visible body writing and tattoos are not allowed. If a student has a tattoo, it must be covered at all times.
- **PE Shorts and Non-Uniform Apparel:** These should not be visible underneath your uniform.

Regular Uniform:

General:

- **Logos:** Only McKeel logos are allowed on clothing; no other brand logos are permitted.
- **Condition:** Clothing must not be torn or tattered.

Pants, Shorts, and Skorts:

- **Acceptable Colors:** Navy blue, khaki, or McKeel Academy Plaid.
- **Note:** Skirts are not allowed.
- **Hemlines:** Shorts and skorts must be mid-thigh length or longer.

Shirts:

- **Colors:** Navy blue, hunter green, or white. Seniors may also wear red.
- **Style:** Must be McKeel “M” logo polo shirts.
- **Fit:** Shirts must fit properly and remain tucked in at all times. Students must wear a shirt under their hoodie, sweatshirt, or jacket.

Shoes:

- **Design:** Shoes must have closed toes and heels.
- **Prohibited:** No sandals, flip-flops, Crocs, slides, slippers, or any open-toe or open-heel shoes.

Belts:

- **Requirement:** Must be worn through belt loops and fastened with a buckle.

Hair:

- **Color:** Hair must be a naturally occurring color.
- **Length:** Must be cut so it does not fall below the eyebrows.
- **Styles:** Extreme or distracting hairstyles (e.g., hair carvings, eyebrow cuts, mohawks, faux-hawks, etchings) are not allowed.

P.E. Uniforms:

- **Purchase:** P.E. uniforms must be purchased from McKeel.
- **Usage:** Worn only during P.E. classes, and is a P.E. grade requirement.
- **Alteration:** Altering P.E. uniforms is not allowed.

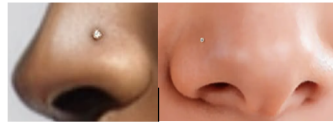
Optional Apparel:**Undershirts and Long-Sleeved Shirts:**

- **Colors:** Allowed in solid white or navy blue.
- **Designs:** Must be free of logos, designs, or writing that can be seen through the uniform shirt or collar.

Sweaters, Sweatshirts, Jackets, and Hoodies:

- **Colors:** Must be solid navy blue or solid gray, or feature an official “McKeel” logo. Black is not permitted.

- **Logos and Symbols:** If students wear a navy or gray sweater, sweatshirt, jacket, or hoodie, and it has a logo or symbol, the logo or symbol must be the size of a business card. Logos or symbols that are larger than a business card is a dress code violation.
- **Hoods:** Hoods may not be worn on the head while on campus.
- **Length:** Must not exceed the length of skorts or shorts.
- **Underneath:** A McKeel uniform shirt, unaltered, must be worn underneath any over garment.
- **Prohibited:** Denim jean jackets and trench coats are not allowed.



Piercings, Body Jewelry, and Tattoos:

- **Nose Stud:** One small nose stud is allowed. Any inappropriate or distracting nose stud must be removed.
- **Prohibited:** Other nose jewelry, tongue rings, lip rings, eyebrow rings, ear gauges, spacers, or any facial jewelry.
- **Body Jewelry/Tattoos:** Visible body jewelry and tattoos are not allowed. If a student has a tattoo, it must be covered at all times.

Hats & Sunglasses - May not be worn inside any school building.

Toys:

- Not allowed on campus without express permission from a classroom teacher or an administrator.
- **Includes:** Teddy bears, other stuffed animals, Legos, footballs, basketballs, etc.

Other Accessories:

- **Accessories:** earrings, rings, bracelets, necklaces, grills, etc., considered extreme or distracting, are not allowed.
- **Headgear:** Caps, hats, sweatbands, hair rollers, durags, and similar items are not allowed during school hours.
- **Bandanas:** May be worn as a headband but not be worn as a head covering

Tights and Leggings:

- **Colors:** White or navy blue only, to be worn under uniform bottoms.

Additional Unacceptable Uniform Issues:

- **Gang-Related Clothing:** Clothing associated with gangs is not allowed.
- **Promotional Clothing:** Clothing that promotes or encourages the use of tobacco, drugs, alcohol, or violence is prohibited.
- **Discriminatory Clothing:** Clothing that promotes or implies discrimination based on age, race, disability, national origin, marital status, religion, political affiliation, or sex is not permitted.

Cold Weather Dress: Students and parents will be notified by email in advance if students will be allowed to wear blue jeans and heavy jackets or coats due to predicted cold temperature. An announcement may be made in school, information will be posted on the McKeel Academy website (www.mckeelacademy.com), and on the McKeel Facebook page ([McKeel Academy of Technology - Home](#)). Students without a “**heavy**” jacket or coat can layer appropriate “optional apparel” to stay warm. On cold weather dress days, IF the student opts to wear a hoodie, it **MUST** be solid navy blue or solid gray and/or have an official “McKeel” logo. **NO** other hoodies are allowed. **BLACK is not an approved color for sweaters, hoodies, jackets, or sweatshirts. Denim jean jackets, trench coats, or blankets are not permitted.**

Full-time MAT Students with 4 or more AP or Dual Enrollment courses per semester: Students may wear “McKeel” spirit, club, team or “McKeel M” shirts with uniform bottoms or regular blue jeans.

Senior Students: Must wear a McKeel “M” polo Monday - Thursday and can wear blue jeans Monday - Friday.

Friday Dress:

- **Shirts:**
 - **Allowed:** “McKeel” spirit, club, or team shirts.
 - **Pairing:** Must be worn with uniform bottoms.
- **Jeans Option:**
 - **Allowed:** For \$1 per Friday (or \$35 for the year), students can wear blue jeans.
 - **Restrictions:** Jeans must not have jegging material, designs, holes,

frays, rips, decorative tattering, sequins, metal beading, or laces.

Professional dress: Administration may occasionally allow students to wear professional attire. The following rules will be strictly enforced:

- Shirts must be tucked in.
- Belts must be worn if appropriate.
- Males: Dress pants with a tucked-in collared shirt and tie.
- Females: Dress slacks or skirts with a dressy blouse, or the option to wear a dress.
- Skirt or dress hemlines must be no shorter than 3” above the knee.

Dress for rewards, field trips, team activities, special events, or spirit week: Rewards, Field Trips, Team Activities, Special Events, or Spirit Week:

- Dress code guidelines for these events will be determined and announced by the team coach, club sponsor, or school designee.
- Homecoming Shirts: Must be pre-approved by administration before ordering and distributing.

Game-Day Attire for Sports Teams and Performers:

- **Sports Teams:**
 - **Allowed Attire:** Team jerseys or shirts designated for Game Days.
 - **When to Wear:** Only on game days.
 - **Pairing:** Must be worn with school uniform bottoms.
- **Cheerleaders and Dazzlers:**
 - **Allowed Attire:** Designated Game-Day shirts.
 - **When to Wear:** Only on performance days.
 - **Pairing:** Must be worn with school uniform bottoms.